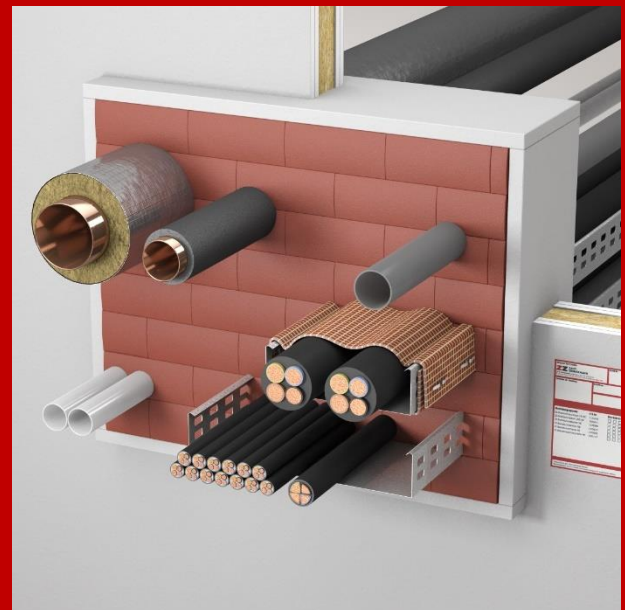
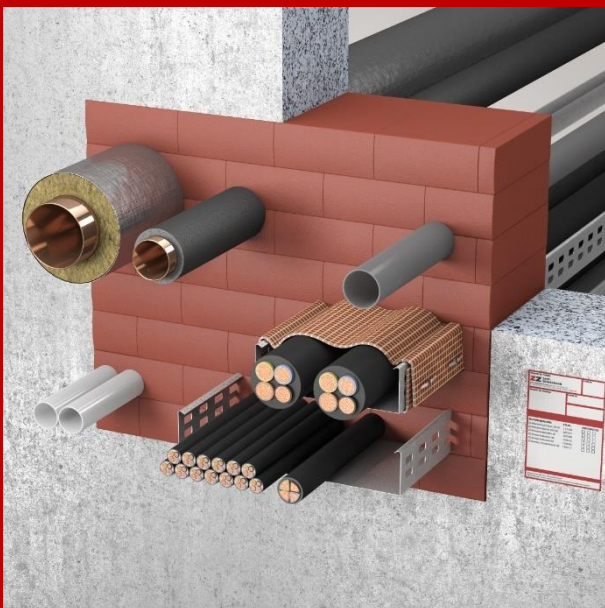
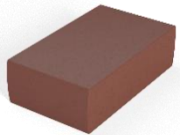

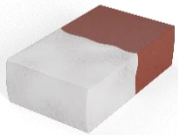







INSTALLATION MANUAL MIXED PENETRATION SEAL

ZZ[®] M20 ETA-10/0431



SYSTEM COMPONENTS MIXED PENETRATION SEAL

Illustration	Designation
	ZZ® 230 Fire Protection Brick
	ZZ® 230 Fire Protection Brick-Vacuumised
	ZZ® 230 Siliconised Fire Protection Brick
	ZZ® 451 Fire Protection Bandage
	ZZ® 330 Fire Protection Foam
	ZZ® 333 Fire Protection Mastic
	ZZ® 430 Fire Protection Collar
	Identification Plate for systems according to abZ / aBG / ETA for individual registration

NOTES ON INSTALLATION REQUIREMENTS

/ The instructions provided in the corresponding documentation (ETA) for the use and application of individual components must be strictly adhered to.

/ Prior to installing the system component, the minimum component thickness, necessary installation depth, opening size, required installations, working clearances, spacing regulations, and potential re-occupation must be assessed and dimensioned accordingly.

/ Special precautions must be taken for installation in flexible walls.

FURTHER NOTES

/ **ZZ® M20 Mixed Penetration Seal** can also be implemented as a blank partition. For this purpose specifications from the approval are to be observed.

/ Attention is drawn to the compliance with safety data sheets.

/ For further information and documents, please refer to the download section of our website:

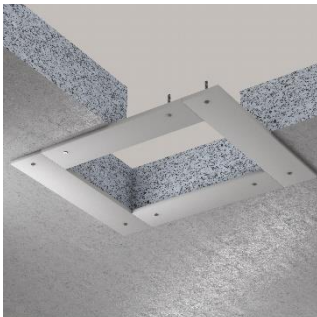
www.z-z.de

www.z-z.eu



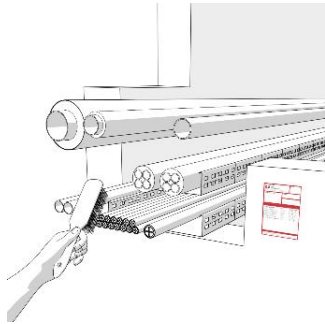
Any further questions?
Please contact our technical support:
phone: +49 221 97061-720 or email: support@z-z.de

INSTALLATION OF FRAMES AND LININGS

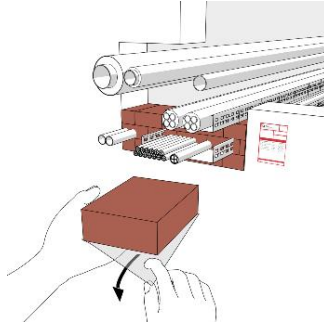


If necessary, additional services must be provided. A fire-resistant reveal is required for light-weight partition walls. The exact requirements can be found in the corresponding certificates.

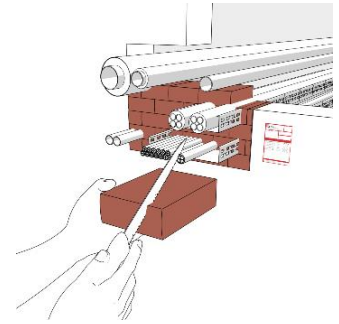
INSTALLATION OF **ZZ**[®] 230 Fire Protection Brick



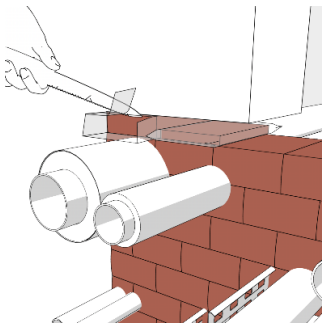
Clean the component aperture.



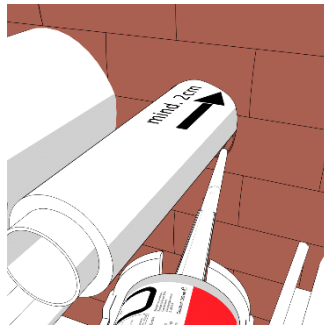
Install the **ZZ**[®] 230 Fire Protection Block snugly in the masonry bond within the component opening, after removing the protective film.



Cut the **ZZ**[®] 230 Fire Protection Block to the size of the exposed area.



ZZ[®] 230 Fire Protection Block vacuum-packed can be used for sealing residual openings. To do this, place the packaged brick in the opening and then cut open the foil. The foil can remain in the penetration seal, however it must be removed flush with the penetration seal on both sides.

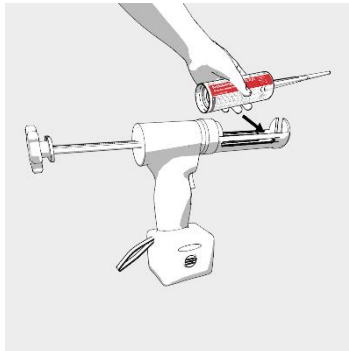


Interstices between cables and open joints must be filled with **ZZ**[®] 333 Fire Protection Mastic at least 20 mm deep on both sides. For the use of cartridges, refer to the section "INSTALLATION OF **ZZ**[®] 330 Fire Protection Foam". When using **ZZ**[®] 333 Fire Protection Mastic, it is not necessary to discard the pre-run.

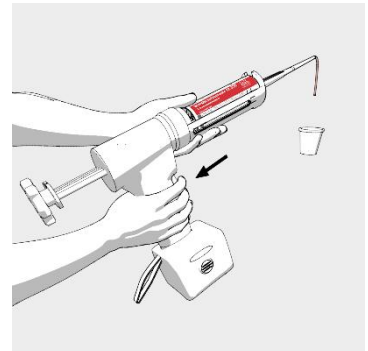
INSTALLATION OF **ZZ**[®] 330 Fire Protection Foam



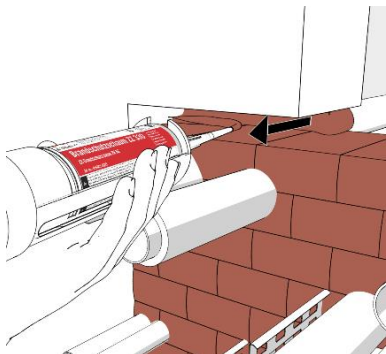
Hold the cartridge vertically with the tip pointing upward, unscrew the sealing cap and screw on the mixer provided.



Insert the cartridge into the dispensing gun.

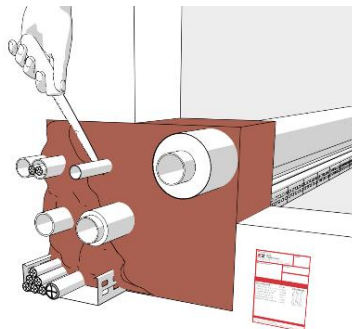


Start pressing out **ZZ**[®] 330 Fire Protection Foam and discard non-uniform initial material.



ZZ[®] 330 Fire Protection Foam should be worked into the opening from back to front. In this process build up the foam from bottom to top, always guide the tip of the mixing nozzle above the foam so that the material does not stick or clog. If work is interrupted for more than 50 seconds the foam will harden in the mixer.

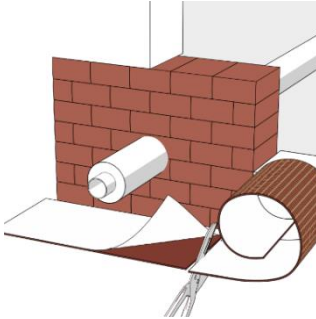
ZZ[®] 230 fire protection brick and the component joint. The area to be filled must not exceed 450 mm x 500 mm and should cover the entire thickness of the penetration seal.



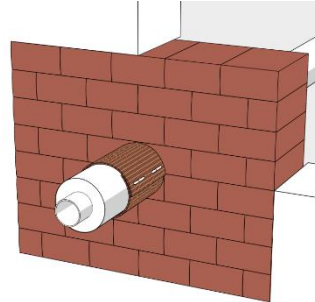
Trim any excess **ZZ**[®] 330 Fire Protection Foam with a suitable knife after approximately 2 minutes, observing the necessary safety precautions and regulations.

INSTALLATION OF ZZ® 451 Fire Protection Bandage

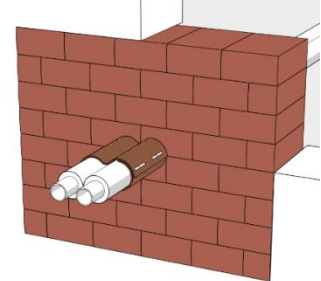
The installation of **ZZ® 451 Fire Protection Bandage** is sometimes required around cables, cable support systems or pre-insulated metal pipes. (certification)



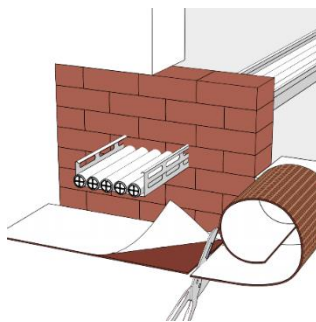
Cut off a sufficiently long piece of **ZZ® 451 Fire Protection Bandage** and after removing dirt from the installation, peel off the protective film and apply the bandage. For wall mounting, apply on both sides, and for ceiling mounting, apply it on the upper side of the ceiling.



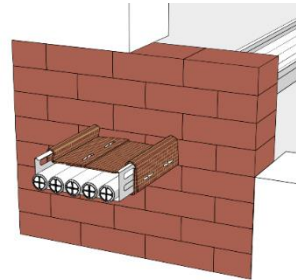
The beginning and end of the **ZZ® 451 Fire Protection Bandage** must be connected with at least two steel clips or steel wire. The length of overlap must be at least 45 mm.



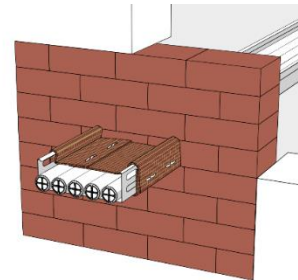
ZZ® 451 Fire Protection Bandage can be applied in pairs with zero spacing for certain pipes, using a single bandage.



Cut off a sufficiently long piece of **ZZ® 451 Fire Protection Bandage** and after removing dirt from the installation, peel off the protective film and apply the bandage.

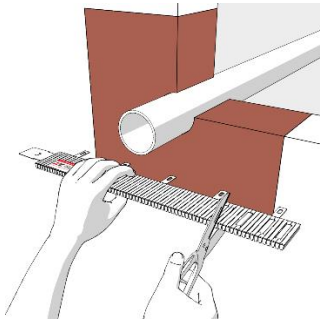


The beginning and end of the **ZZ® 451 Fire Protection Bandage** must be connected with at least two steel clips or steel wire. The length of overlap must be at least 45 mm.

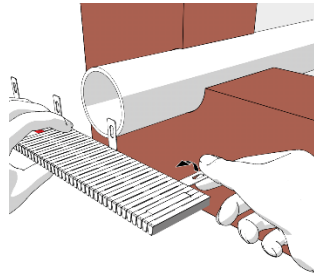


For wall mounting, apply **ZZ® 451 Fire Protection Bandage** on both sides, and for ceiling mounting, apply it on the upper side of the ceiling.

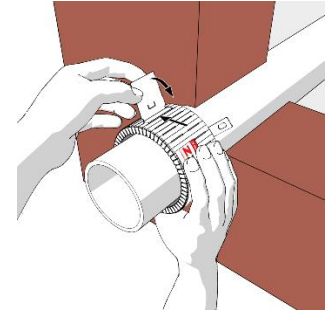
INSTALLATION OF **ZZ**[®] 430 Fire Protection Collar



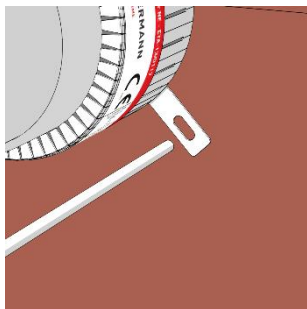
Select the suitable collar size for the pipe or cut the **ZZ**[®] 430 Fire Protection Collar to size.



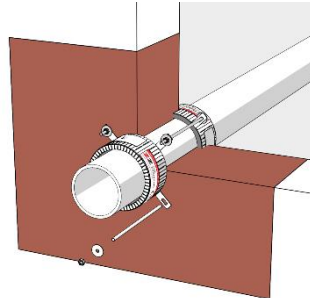
Bend all fastening tabs outward at a right angle. For soundproofing reasons, the PE sound insulation can be used under the sleeve, and optionally through the penetration sealing. The insulation can be attached around the installation using the included adhesive strip.



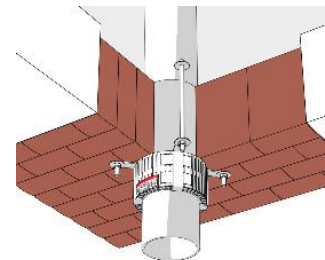
Place the **ZZ**[®] 430 Fire Protection Collar around the pipe. Fasten the fire protection collar by pulling the locking tab through the opening and bending the tab 180°.



Pass the $\varnothing 6$ mm threaded rods through the penetration and secure **ZZ**[®] 430 Fire Protection Collar with washers and nuts.



For wall mounting, apply **ZZ**[®] 430 Fire Protection Collar on both sides. Therefore the same threaded rods can be used for both sleeves.



ZZ[®] 430 Fire Protection Collar must be installed on the underside for ceiling mounting.

ZAPP-ZIMMERMANN GmbH
Marconistraße 7-9
50769 Cologne, Germany

Telefon: +49 221 97061-700
Fax: +49 221 97061-929
E-Mail: info@z-z.eu

Images

ZAPP-ZIMMERMANN GmbH

Copyright

© ZAPP-ZIMMERMANN GmbH

Last revised 18.04.2024/ TP220704

Modifications and errors excepted.

Reprint, as well as any duplication

Only with our written consent.

zz[®], **zz**[®] and **ZZ ZAPP-ZIMMERMANN**[®] are
registered trademarks on behalf of ZAPP-ZIMMERMANN GmbH