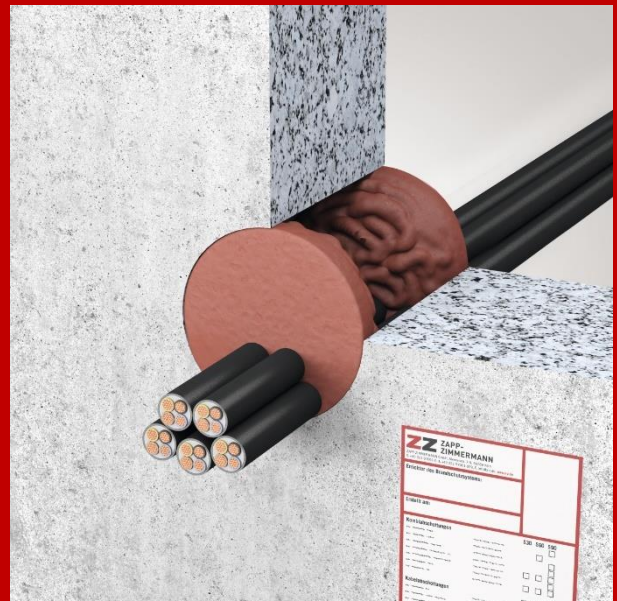


INSTALLATION MANUAL CABLE PENETRATION SEAL

ZZ[®] C30 ETA-13-0093



SYSTEM COMPONENTS CABLE PENETRATION SEAL

Illustration	Designation
	ZZ® 333 Fire Protection Mastic
	Identification Plate for systems according to abZ / aBG / ETA for individual registration

NOTES ON INSTALLATION REQUIREMENTS

/ The instructions provided in the corresponding documentation (ETA) for the use and application of individual components must be strictly adhered to.

/ Prior to installing the system component, the minimum component thickness, necessary installation depth, opening size, required installations, working clearances, spacing regulations, and potential re-occupation must be assessed and dimensioned accordingly.

FURTHER NOTES

/ Attention is drawn to the compliance with safety data sheets.

/ For further information and documents, please refer to the download section of our website:

www.z-z.de

www.z-z.eu

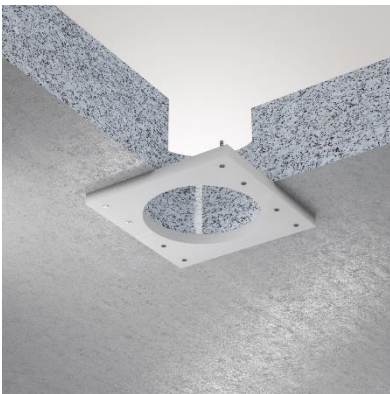


Any further questions?

Please contact our technical support:

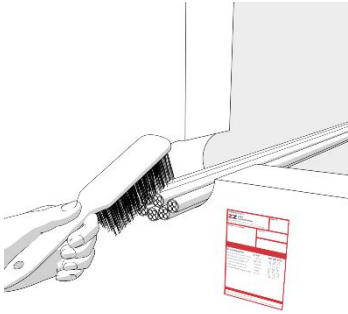
phone: +49 221 97061-720 or email: [**support@z-z.de**](mailto:support@z-z.de)

INSTALLATION OF FRAMES AND LININGS

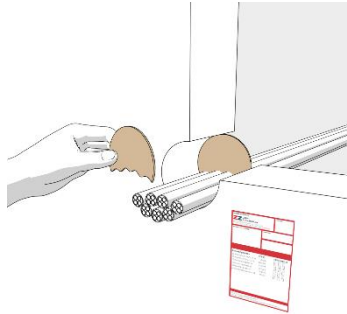


If necessary, additional services must be provided. A fire-resistant reveal is required for light-weight partition walls. The exact requirements can be found in the corresponding certificates.

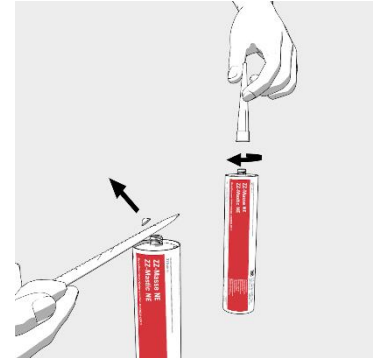
INSTALLATION OF **ZZ**[®] 333 Fire Protection Mastic



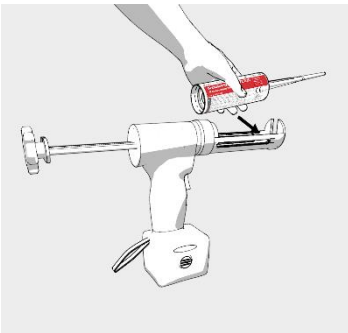
Clean the component aperture.



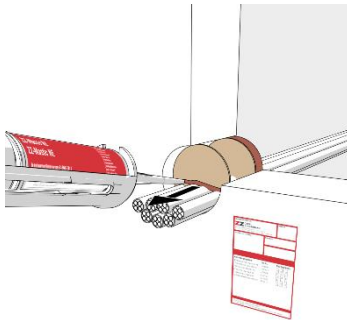
Backfill material, consisting of mineral wool, cardboard or polyethylene can be used. It must be ensured that the minimum fill depth of the **ZZ**[®] 333 Fire Protection Mastic can be complied with.



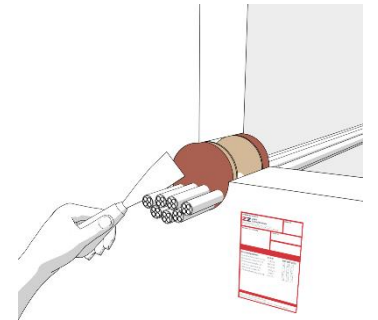
Hold the cartridge vertically, cut off the tip with a sharp knife, and screw on the nozzle. The nozzle can be shortened as needed.



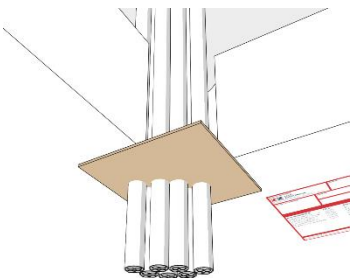
Insert the cartridge into the dispensing gun.



ZZ[®] 333 Fire Protection Mastic must be introduced uniformly into the opening from back to front. The gaps should be filled with sufficient sealant.



ZZ[®] 333 Fire Protection Mastic can be smoothed, for example, with a smoothing trowel.



For larger openings in floors the use of a formwork on the underside of the floor is recommended. This can remain on the through penetration firestop system.

ZAPP-ZIMMERMANN GmbH
Marconistraße 7-9
50769 Cologne, Germany

Telefon: +49 221 97061-700
Fax: +49 221 97061-929
E-Mail: info@z-z.eu

Images

ZAPP-ZIMMERMANN GmbH

Copyright

© ZAPP-ZIMMERMANN GmbH

Last revised 18.04.2024/ TP220704

Modifications and errors excepted.

Reprint, as well as any duplication

Only with our written consent.

ZZ[®], **ZZ**[®] and **ZZ ZAPP-ZIMMERMANN**[®] are
registered trademarks on behalf of ZAPP-ZIMMERMANN GmbH