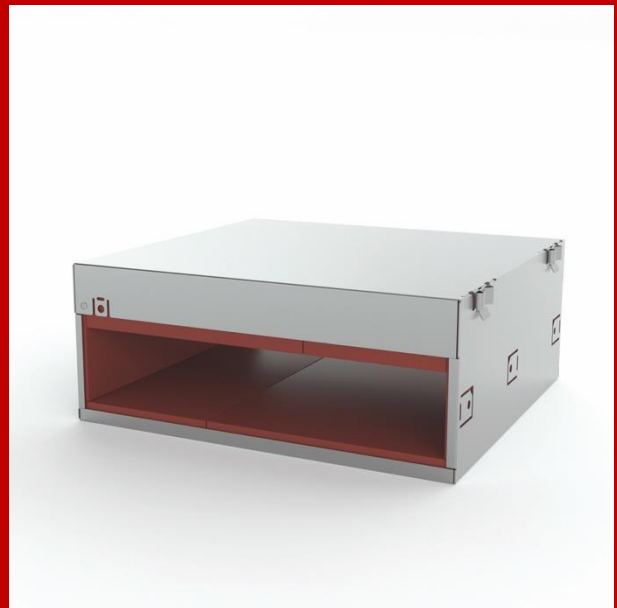
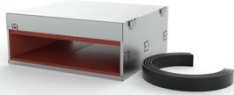

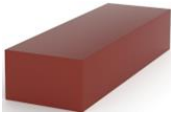





INSTALLATION MANUAL MIXED PENETRATION SEAL

ZZ[®] M60 ETA-21/1055



SYSTEM COMPONENTS MIXED PENETRATION SEAL

Illustration	Designation
	<p>ZZ® 630 Fire Protection Box 4-sided</p>
	<p>ZZ® 630 Fire Protection Box 3-sided</p>
	<p>ZZ® 231 Fire Protection Inlay</p>
	<p>ZZ® 330 Fire Protection Foam</p>
	<p>ZZ® 452 Fire Protection Wrap</p>
	<p>Identification Plate for systems according to abZ / aBG / ETA for individual approval</p>

NOTES ON INSTALLATION REQUIREMENTS

/ The instructions provided in the corresponding documentation (ETA) for the use and application of individual components must be strictly adhered to.

/ Prior to installing the system component, the minimum component thickness, necessary installation depth, opening size, required installations, working clearances, spacing regulations, and potential re-occupation must be assessed and dimensioned accordingly.

/ Special precautions must be taken for installation in flexible walls.

FURTHER NOTES

/ **ZZ® M60 Mixed Penetration Seal** can also be implemented as a blank partition. For this purpose specifications from the approval are to be observed.

/ Attention is drawn to the compliance with safety data sheets.

/ For further information and documents, please refer to the download section of our website:

www.z-z.de

www.z-z.eu

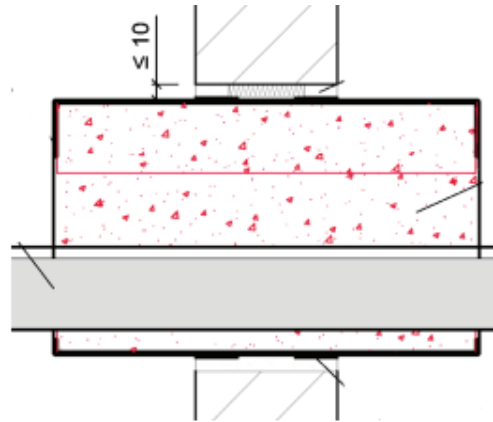
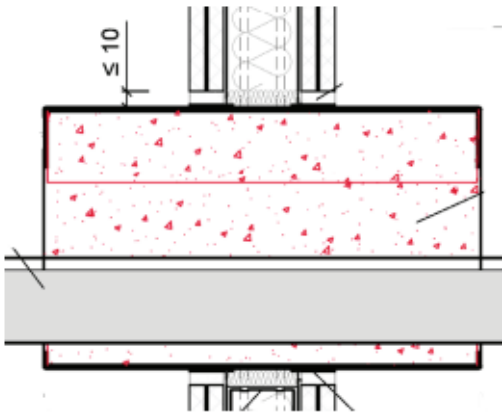


Any further questions?

Please contact our technical support:

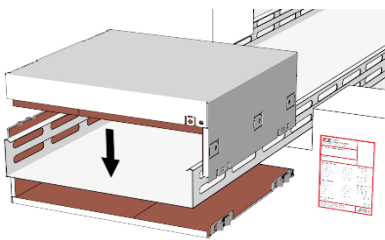
phone: **+49 221 97061-720** or email: **support@z-z.de**

INSTALLATION OF ZZ[®] 630 FIRE PROTECTION BOX 4-SIDED

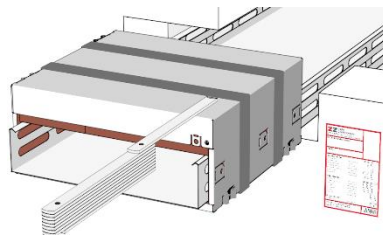


Gap space

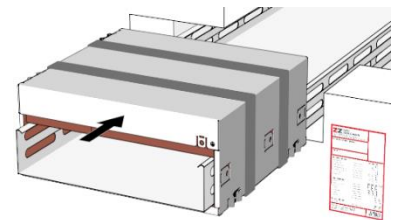
ETA: max. 30 mm at walls and rigid floors



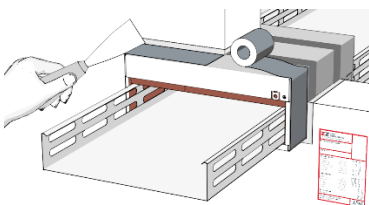
ZZ[®] 630 Fire Protection Box
assemble up to the 4 lock
elements are clicked in



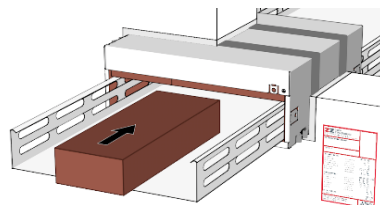
ZZ[®] 452 Fire Protection Wrap
wrap around the box flush with the
construction surfaces on both sides
of the opening and stick them on
by removing the separator strip



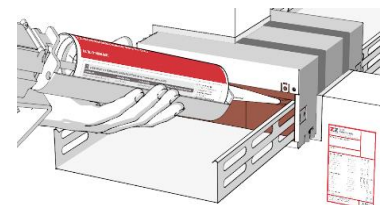
ZZ[®] 630 Fire Protection Box
insert centered into the wall



ZZ[®] 630 Fire Protection Box
fill up the gap with dimension
stable cement or gypsum
mortar

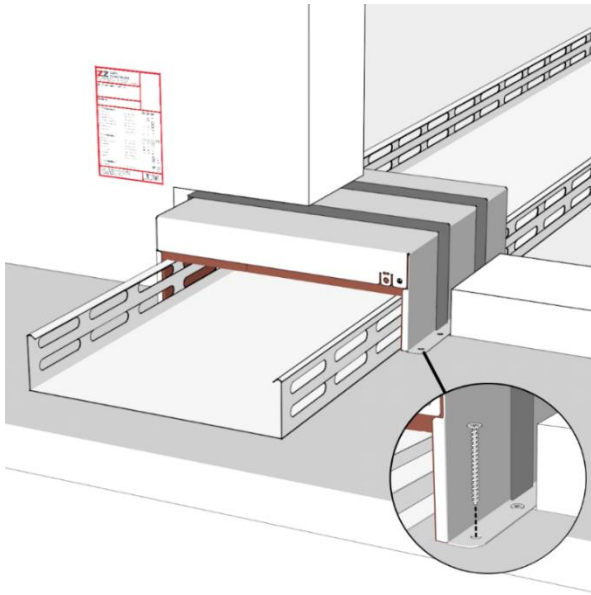


ZZ[®] 231 Fire Protection Inlay
for filling up wide openings, fit cut
and push into the opening



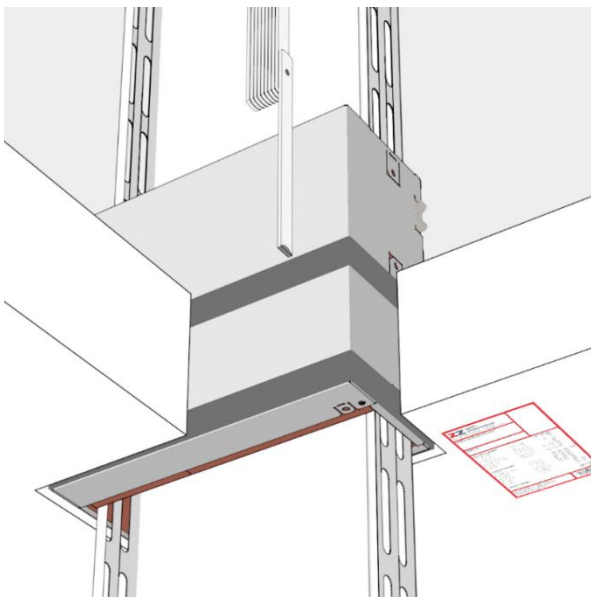
ZZ[®] 330 Fire Protection Foam
for fill up small openings

INSTALLATION OF **ZZ**[®] 630 FIRE PROTECTION BOX 3-SIDED



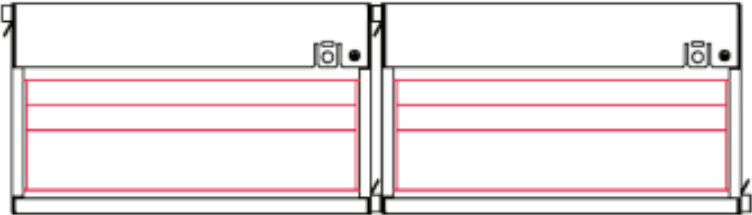
The 3-sided **ZZ**[®] 630 Fire Protection Box can optionally be mounted by screws as an assembling fixation. Further installation steps as described above.

INSTALLATION OF **ZZ**[®] 630 FIRE PROTECTION BOX AT RIGID FLOORS

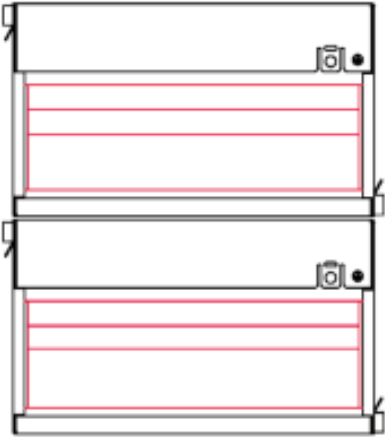


For use in rigid floors, the box must be flushed with the underside of the rigid floor. Further installation steps as described above.

MULTIPLE ARRANGEMENT OF THE **ZZ[®] 630** FIRE PROTECTION BOX



ETA: unlimited boxes can be arranged next to each other



ETA: two boxes can be stacked on each other

ZAPP-ZIMMERMANN GmbH
Marconistraße 7-9
50769 Cologne, Germany

Telefon: +49 221 97061-700
Fax: +49 221 97061-929
E-Mail: info@z-z.eu

Images

ZAPP-ZIMMERMANN GmbH

Copyright

© ZAPP-ZIMMERMANN GmbH

Last revised 18.04.2024/ TP220704

Modifications and errors excepted.

Reprint, as well as any duplication

Only with our written consent.

ZZ[®], **ZZ**[®] and **ZZ ZAPP-ZIMMERMANN**[®] are
registered trademarks on behalf of ZAPP-ZIMMERMANN GmbH